



PG Mutual Benefits – The Mutual Way

PG Mutual became a client of Parliament Hill in 2015; since then we have worked closely together to make sure that the 'PG Mutual Benefits' proposition complements the service we provide their members. PG Mutual were able to access the buying power of Parliament Hill's 7 million members to secure top brands and competitive offers.



Every Member Matters

The scheme is connected to their mission to build a genuine 'member' relationship



Giving Back to their Members

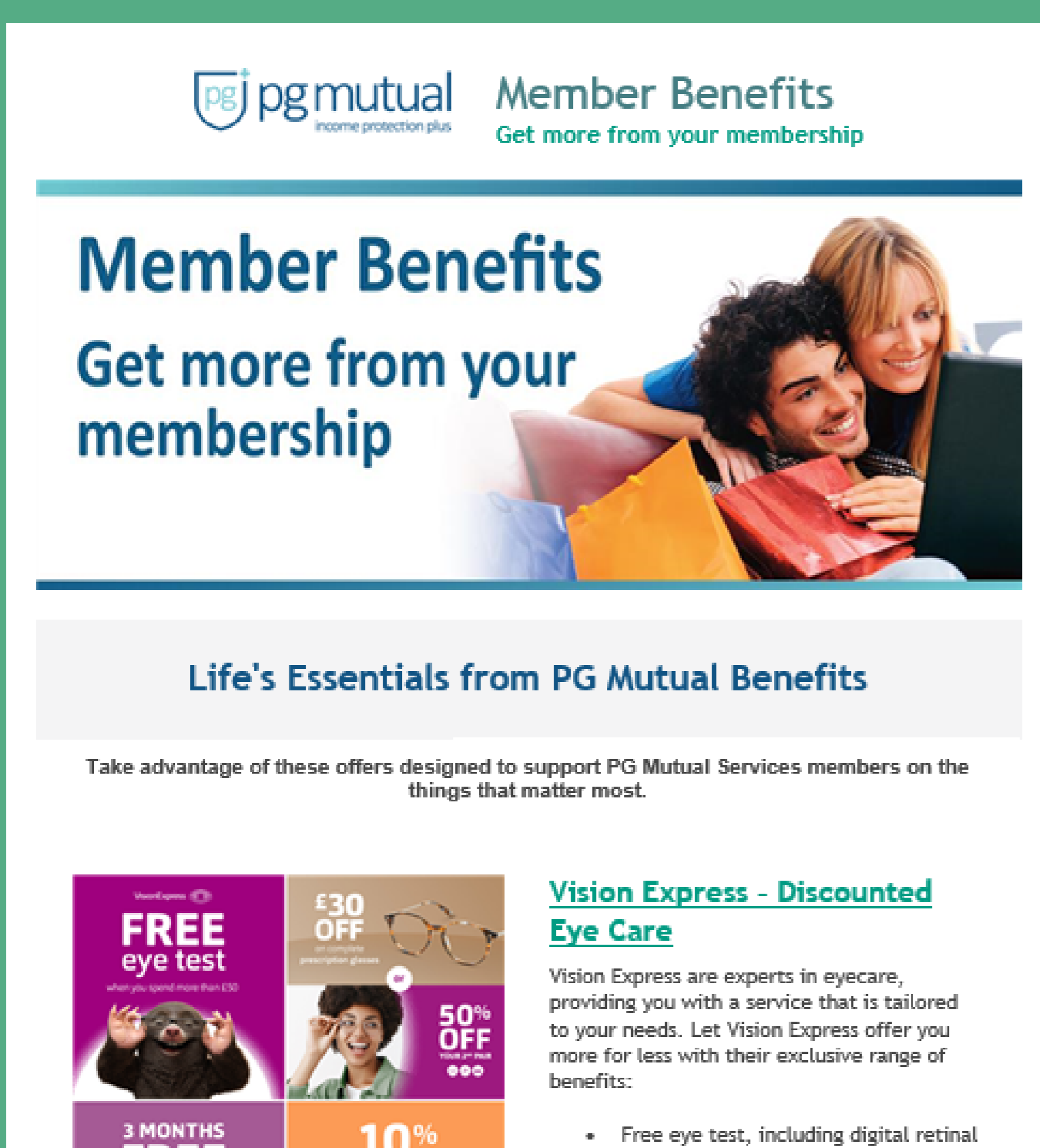
PG Mutual Benefits added value to PG Mutual's membership proposition by offering their members, not only a good value product but helping them save money.

In the current climate, their members are looking for a greater amount of value across all their purchase decisions. The scheme offers members the opportunity to save on the things that matter most such as:

- Everyday purchases (groceries and fitness)
- Expensive necessities (motoring and white goods)
- Free legal and financial advice



Positive messages in communication campaigns



Promoting monthly offers provides a friendly and regular 'touch point' with their members. They send their members an email dedicated to promoting the scheme to help raise awareness of the offers that are available to them that month.

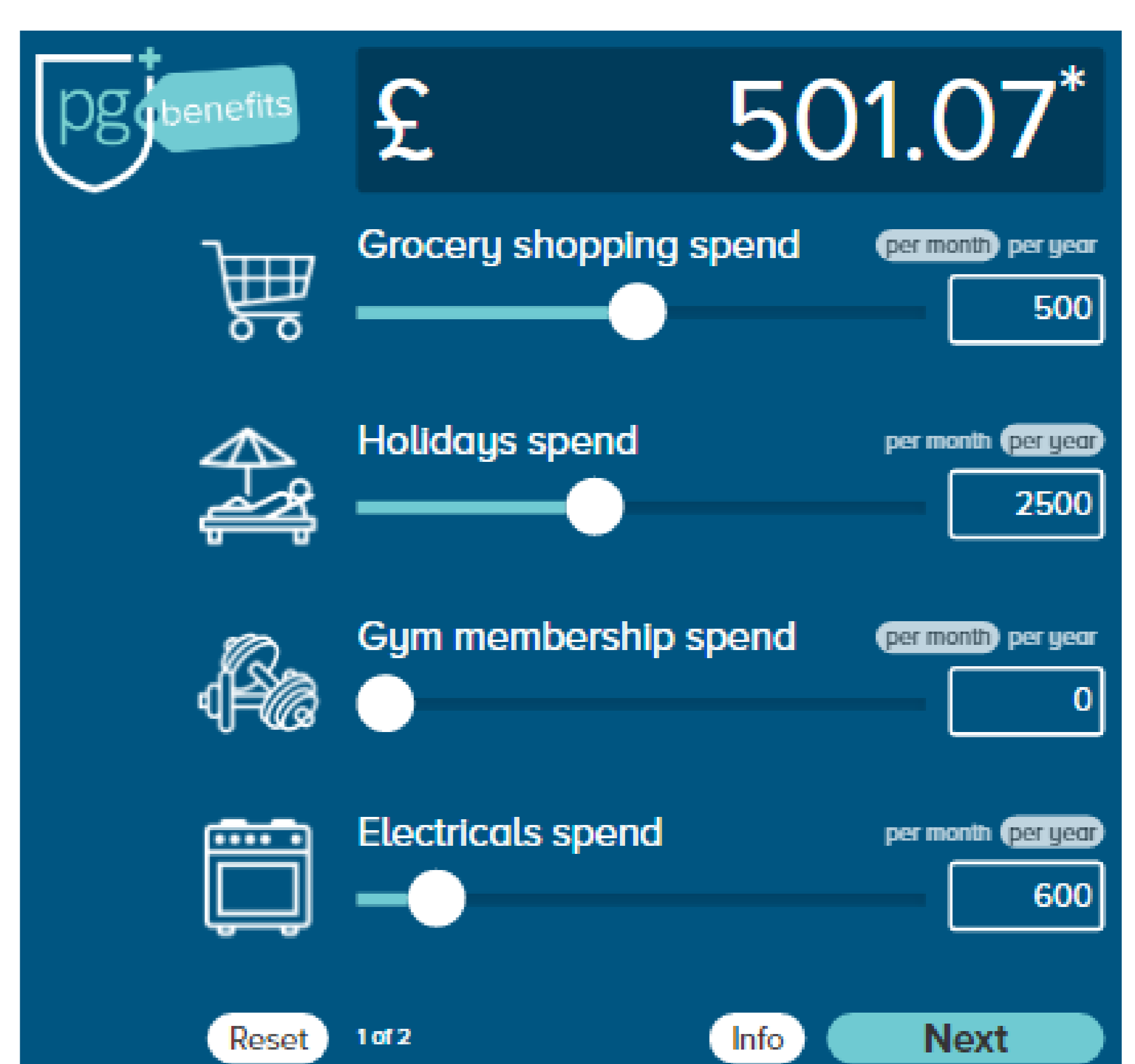
Members receive monthly offers from brands including:

- Apple
- John Lewis
- Sainsbury's
- Vision Express
- Hotels.com



Adding value through showing real savings

PG Mutual demonstrated to members how much they could save by utilising the scheme's Savings Calculator. This interactive tool gave individual members the opportunity to calculate their annual spend and work out how much they could save on everything from their household spend to holidays.



Investing in the scheme, investing in members

Over the past 6 years, PG Mutual has grown by 40% through investing in multiple initiatives including PG Mutual Benefits.

Are you interested in having your own member benefits scheme?

To find out how a benefit scheme could help improve engagement for your membership organisation, please give us a call on 0207 710 9494.

*Terms and conditions apply. See website for details. Offers subject to change without notice and correct at time of issue. This average member saving is based on a sample of 613 savings calculator entries since 19/01/2015 with repeated entries and the top 20% removed. The average saving figure is correct as of 6/07/2022. Potential savings generated from the calculator are not guaranteed, and are based on you using specific benefits. PG Mutual Benefits is managed and run on behalf of PG Mutual by Parliament Hill Ltd.